



ArgusConnect Pty Ltd  
ABN 63107558387  
Suite 9, GreenHill Enterprise Centre  
University Drive, Ballarat Victoria 3353  
Tel: 0415 645 291  
Email: [andrew.s@argusconnect.com.au](mailto:andrew.s@argusconnect.com.au)  
Website: <http://www.argusconnect.com.au>

## Using The Client Setup Program

Last Updated: 9. Oct. 2006

# Table of Contents

1	Introduction .....	1
1.1	Purpose of Document .....	1
1.2	Terms and Abbreviations .....	1
2	Using the Client Setup Program .....	3
2.1	What is the Client Setup program .....	3
2.2	Sharing the Argus 'Client' Directory .....	3
2.3	Accessing the Client Setup Program .....	5
2.4	Using the Client Setup Program .....	7
2.4.1	File Menu .....	7
2.4.2	Install Menu .....	7
2.4.3	Uninstall Menu .....	8
2.4.4	Help Menu .....	9
3	Hints, allegations and things left unsaid .....	9

# 1 Introduction

## 1.1 Purpose of Document

This is a detailed guide outlining the features and use of the Client Setup program. It is an additional document that is specific to Windows users.

This guide presupposes a high-level understanding of Argus, as described in detail on the ArgusConnect website.

## 1.2 Terms and Abbreviations

Term	Definition
Argus	The suite of programs that provides for the secure mail-exchange between health care providers (GPs, pathology labs, specialists etc.)
ArgusMessenger	This is a program that interacts with POP3/SMTP, IMAP and LDAP servers. It implements advanced HL7 handling and encryption via PKI. One instance of ArgusMessenger runs at each location.
ArgusMail	This is the 'client', a program that allows users to view and send email. An instance of ArgusMail runs on each user's desktop.
ArgusAgent	This is a program that can be run in background mode to fire defined events at designated intervals. Tasks include the automatic sending of documents dropped into a directory, and polling for files to be printed automatically.
Argus Message Broker	The program that allows an administrator to review batches of messages before sending them, such as might occur in a radiology practice.
ArgusAPI	This is an API module that allows other applications to interact with Argus without using the Argus GUI. Non-windows applications can interact directly with a Java class in Argus itself, and Windows applications can use COM.
Message	A mail item, downloaded from the mail server and stored in an Interbase database. As with any email, messages often include attachments.
LDAP	Lightweight Directory Access Protocol is a client server protocol for accessing a directory service.
Folder	This does not refer to a file directory. It is used here to denote a mail folder in ArgusMail, such as the Inbox.
HQL	HL7 Query Language is a script language for retrieving data fields from an HL7 message.

XML	eXtensible Markup Language. A widely used standard from the World Wide Web Consortium (W3C) that facilitates the interchange of data between computer applications. Computer programs (such as the XMLUtilities module in Argus) can automatically extract data from an XML document, using its associated XSD as a guide.
XSD	XML Schema Definition. A file which defines the building blocks of an XML document, and which can be used a template when converting another format (in this case, HL7) to XML and vice versa.
XMLUtilities	A generic module which, when provided with an XSD, can convert HL7 messages into XML and vice versa. It makes use of the SAX Java library.
SAX	The Simple API for XML, a 'de-facto' standard for XML handling in Java. SAX is an event based API, which reports parsing events (such as the start and end of elements) directly to the application (in this case, to the XMLUtilities module).

## 2 Using the Client Setup Program

### 2.1 What is the *Client Setup* program

The Client Setup program is a Windows based program that allows a user to set up access to the Argus database from across the network. This program replaces the previous Windows client installation of the Argus Mail program.

This new Client Setup program will access a shared directory across a network, and access all the files and folders that it needs to run Argus Mail and all associated Client programs (e.g. MAPI and Argus Word).

The Client Setup program is distributed with the main installation of 'Argus 4.2 for Windows'. It is located in the Client directory of the Argus installation under the name 'Client Setup.exe'.

### 2.2 Sharing the Argus 'Client' Directory

Once the Argus suite of programs has been installed on the 'Server' machine, the Client directory of this install must be shared so that any users can access it. This allows a 'Client' machine to be setup and be able to interact with Argus.

To share the client directory right click the 'Client' directory of the Argus Installation (usually C:\Program Files\Argus\Client), and select the 'Sharing and Security' menu item.

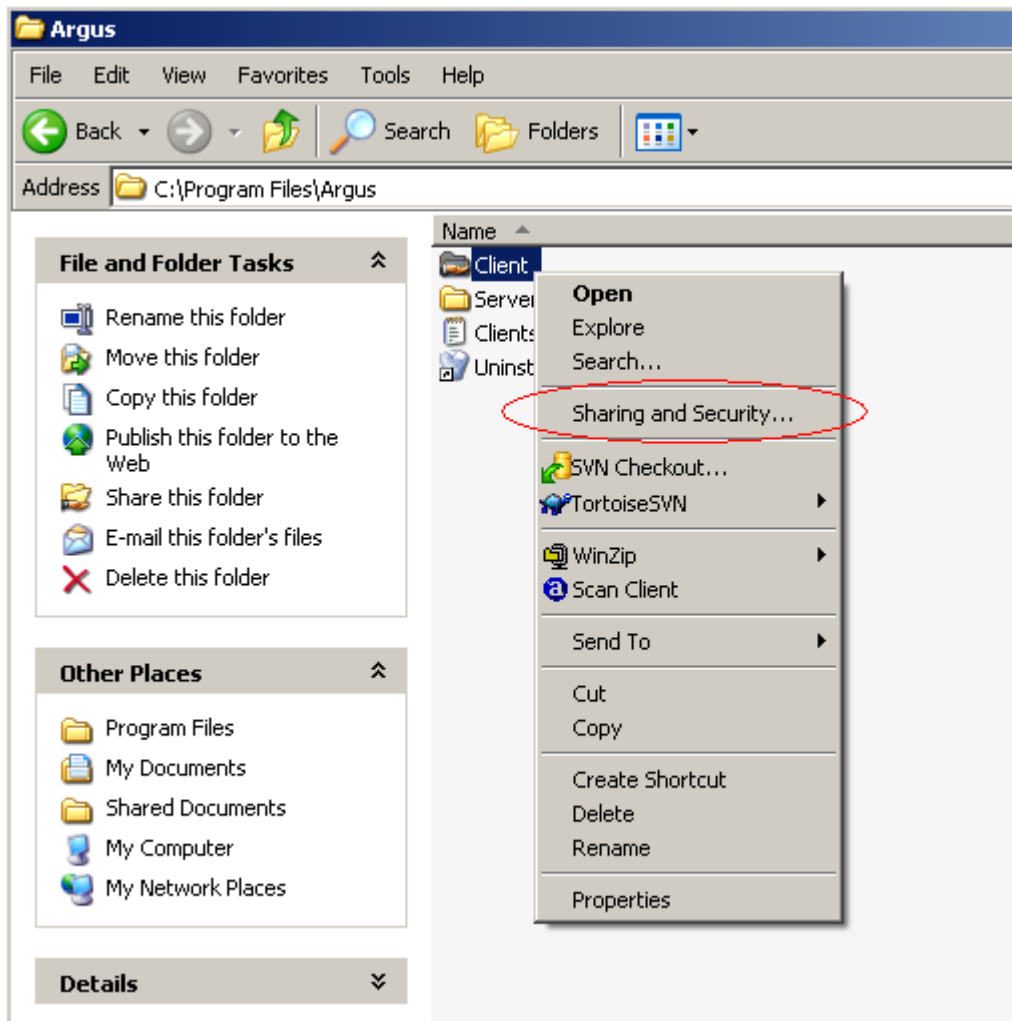


Figure 1: Setting up Sharing of Client directory

The folder sharing dialog will then appear, and it is here that the sharing for this folder can be setup. Click on the two check boxes on this screen entitled, 'Share this folder on the network' and 'Allow network users to change my files'.

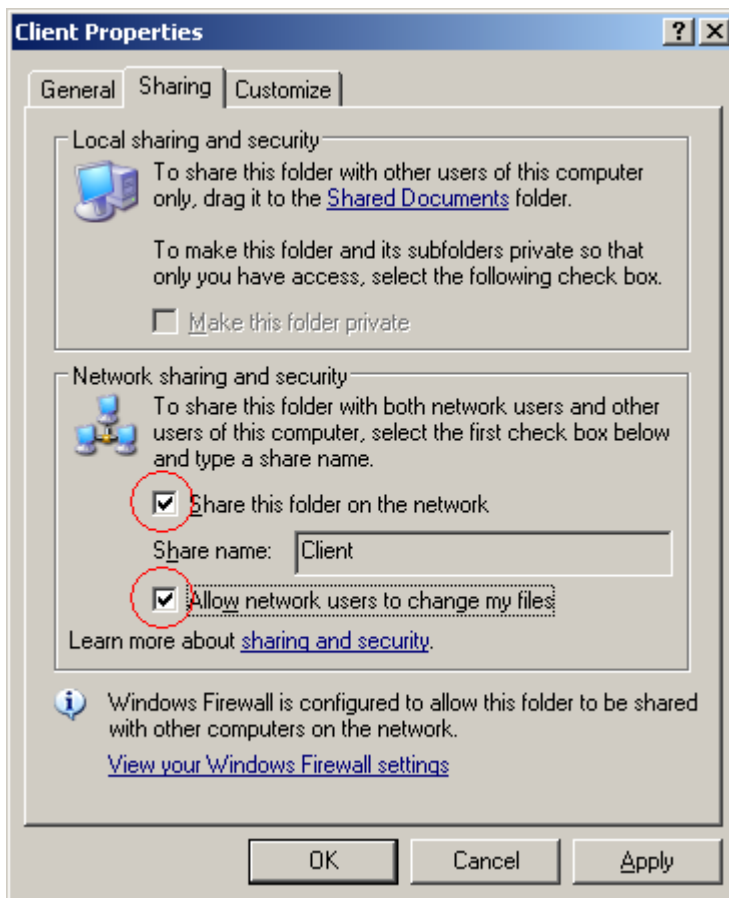


Figure 2: Enabling the sharing of the Client Folder

After you have selected the two check boxes select Apply and then OK. This folder will now be accessible across the network.

## 2.3 Accessing the *Client Setup* Program

To access the Client Setup program from a computer other than the 'Server' machine that Argus is installed on, open a 'My Computer' window and using the Computer Name or IP address of the 'Server' machine run the file 'Client Setup.exe'. E.g. \\192.168.1.1\Client or \\The\_Computer\Client.

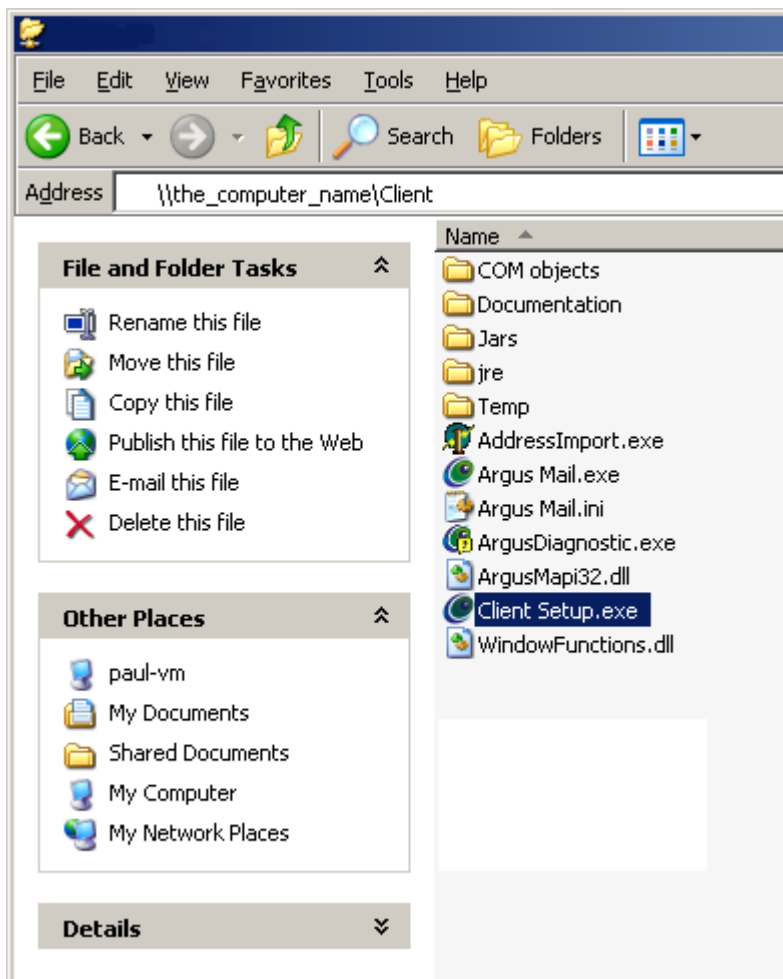


Figure 3: Finding the Client Setup Program

Once you have found the Client Setup.exe file run it and you are ready to install the required Argus Client machine properties.

## 2.4 Using the *Client Setup* Program

Once the 'Client Setup.exe' program has been run you will be presented with the Argus Client Setup dialog.



Figure 4: Client Setup Dialog

The Client Setup program has four main menus. These menus allow you to enable and disable client functions such as MAPI calls used in Medical Director, and the creation of messages via ArgusWord.

### 2.4.1 File Menu

The file menu has only one option which closes the Client Setup dialog.



Figure 5: Client Setup File Menu

### 2.4.2 Install Menu

The 'Install' menu of the client setup program is the most important menu item. It comprises of four sub menus that setup all of the required elements that enable access to the Argus database via, ArgusWord, MAPI(Medical Director) and Argus Mail.

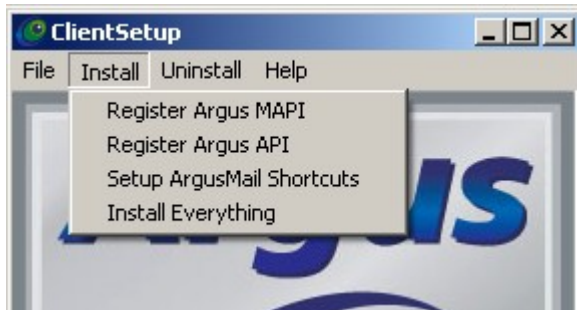


Figure 6: Client Setup Install Menu

### Register Argus MAPI

When this Menu Item is selected it will register all the required elements for Argus to perform simple MAPI calls from applications such as Medical Director.

### Register Argus API

When this Menu Item is selected it will register all the required elements for Argus to perform API calls and enable ArgusWord.

### Setup ArgusMail Shortcuts

When this Menu Item is selected it place an ArgusMail icon on the users desktop. This icon allows access to a users mail that is stored in the Argus Database on the 'Server' machine. See the document 'Using ArgusMail' for details about logging into ArgusMail.

### Install Everything

This menu item registers Argus MAPI, registers Argus API and creates the shortcuts on the users desktop

## 2.4.3 Uninstall Menu

The 'Uninstall' menu of the client setup program comprises of four sub menus that remove all of the elements that may have been installed using the 'install' menu. These menu items can remove access to the Argus database via ArgusWord, MAPI(Medical Director) and Argus Mail.



Figure 7: Client Setup Uninstall Menu

### Unregister Argus MAPI

When this Menu Item is selected it will unregister and remove all the simple MAPI information being used by Argus. This will remove the ability for applications such as Medical Director to interact with Argus from this machine.

### Unregister Argus API

When this Menu Item is selected it will unregister and remove all the API and ArgusWord information being used by Argus. This will remove the ability for any API calls or ArgusWord to interact with Argus from this machine.

### Remove ArgusMail Shortcuts

When this Menu Item is selected the ArgusMail icon on the users desktop is removed.

### Uninstall Everything

This menu item unregisters and removes Argus MAPI, Argus API and the shortcuts on the users desktop.

## 2.4.4 Help Menu

The help menu shows a dialog outlining the version of the Client Setup being used

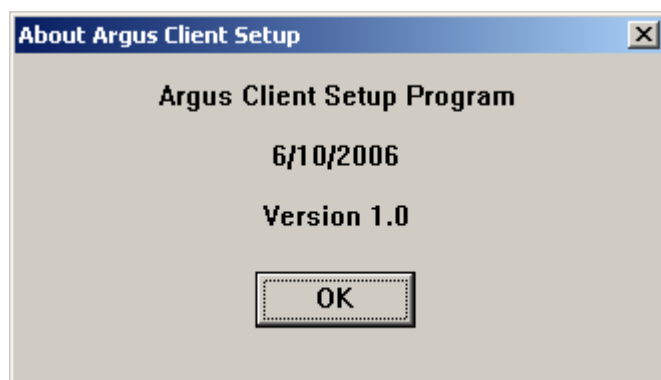


Figure 8:Client Setup Help Menu

## 3 Hints, allegations and things left unsaid

If you have any suggestions for future versions or Argus, please feel free to log your suggestions in Questa, on the ArgusConnect website or by mailing [argushelp@argusconnect.com.au](mailto:argushelp@argusconnect.com.au) or phoning the ArgusConnect helpdesk on (03) 5335 2221 during business hours.

--- fin ---

Paul McMahon  
October 2006